



Lotus Domino®
Application



**GeoCom®
Library**

Version 7.2 Build 702 - February 2007

**Handbook
WebOPAC**

Copyright ISG Information Systems GeoCom GmbH, 1997 - 2007

Contents

1	Introduction	4
1.1	Technical Requirements	4
1.2	Installation of webOPAC Database for Notes Administrators	4
1.3	Opening the Database webOPAC	4
2	Database Configuration	5
2.1	Access Rights	5
2.1.1	Access Rights for Administrators	5
2.1.2	Access rights for webOPAC Users.....	5
2.1.3	Access rights to the supply databases.....	6
2.2	Views.....	6
2.2.1	View “01 Configuration web client”	6
2.2.2	View “02 Configuration (Backup)”	10
2.3	Configuration	10
2.3.1	Main Parameter.....	11
2.3.1.1	Type of search form	11
2.3.1.2	Browser title.....	11
2.3.1.3	Start page on database open	11
2.3.1.4	CSS Definition	11
2.3.1.5	Format search / result page	12
2.3.1.6	Format book list.....	15
2.3.1.7	Search hint	15
2.3.1.8	Title line search form	15
2.3.1.9	Field list simple search	15
2.3.1.10	Field list extended search	16
2.3.1.11	Support.....	16
2.3.1.12	Support mail address	16
2.3.1.13	Language switch german / English	16
2.3.1.14	Help	17
2.3.1.15	Field descriptions	17
2.3.1.16	Parameter for preview images	17
2.3.1.17	Parameter for high res images.....	17
2.3.2	Single / Extended search.....	17
2.3.3	Title format	17
2.3.3.1	Display format selection	18
2.3.3.2	Display formats.....	18
2.3.3.3	Browser presentation (screen)	18
2.3.3.4	Browser presentation (printer).....	20
2.3.4	Copy data	20
2.3.5	Multiple Database OPAC	21
2.3.5.1	Indexed database list	21

2.3.5.2	Index search site database	21
2.3.5.3	Show database location, info link and login link.....	21
2.3.5.4	Short names of databases to display in search result	22
2.3.5.5	Location name used for database selection	22
2.3.5.6	Query auto extension	22
2.3.5.7	Presorting via ISBN is default	22
2.3.5.8	Pre-Sort by the following fields.....	22
2.3.5.9	max hits	22
2.3.5.10	ISO 3166 Country Code Database	23
2.3.5.11	Log database.....	23
2.3.6	Printer	23
2.3.7	Contact form	23
2.3.8	Customer specific german/english prompts	24
2.3.9	License	25

1 Introduction

The webOPAC database is an extension to the application "GeoCom[®] Library" and provides an interface for library access via web browsers (e.g. Microsoft Internet Explorer, Mozilla Firefox etc.).

The database itself contains no searchable data, but is used only for configuration and as user interface.

Configuration of search options can be done by administrators using a Notes client. Invoking the search form and starting search tasks could be done via browser interface.

The search form can be used to select a data source (one or more databases) and to type in search queries. Search queries are processed on the server and results are sent back to the browser as dynamic HTML pages.

1.1 Technical Requirements

The webOPAC database requires a Domino 6.5.3 Server. Additionally, the HTTP task has to be started to enable for automatic conversion of Notes documents into HTML pages. All related databases have to be full text indexed.

Supported browsers include Microsoft Internet Explorer version 5.5 and Mozilla Firefox version 1.0 or higher.

1.2 Installation of webOPAC Database for Notes Administrators

To install the database on your Lotus Notes workspace just follow these steps:

First select from menu

File – Database – Open

Select the server on which the database resides and select the proper file (webOPAC). Now click on the button "**add symbol**".

The new symbol will be added to your Notes workspace .

1.3 Opening the Database webOPAC

To open the database double-click your mouse on the symbol on your Notes-workspace.

➡ **INFO:** To leave the database and return to your Lotus Notes desktop press "**Esc**".

2 Database Configuration

Access rights for administrators and users have to be set prior to the first use of the webOPAC database. Furthermore the source databases have to be defined in which the library data resides. Selection options that will be provided to the users and the overall appearance of the search form can be defined, too.

2.1 Access Rights

Access rights have to be set for administrators to enable database configuration and for users to enable database research.

2.1.2 Access rights for webOPAC Users

Users of webOPAC can be defined as anonymous or with identification. The search itself – i.e. access to the library data – is in both cases performed with the rights of the user that saved (and thereby signed) the agents (OpenQuery61) and (RunQuery61).

For this purpose, open the webOPAC database with the Lotus Domino Designer by right-clicking the corresponding tile on your Notes workspace and choosing the option “Open in Designer”.

➡ **NOTE:** You need a Notes ID with “Manager” access to the webOPAC database to be able to open it using the Designer!

Choose the option “Agents” from “Shared code”. Open the respective agent and choose the tab “Security” from the “Attributes” dialogue.

Enter the Notes ID, which rights should be used to run the respective

agent in the future into the field “Run on behalf of”. If you leave the field empty, the current Administrator-ID will be used.

Make sure to leave the field “Run as web user” deactivated, because otherwise access problems may appear.

Save the document anyway, before closing it, to refresh the configuration!

Proceed in the same way with the other required agents to sign (OpenQuery61) as well as (RunQuery61) with the according rights.

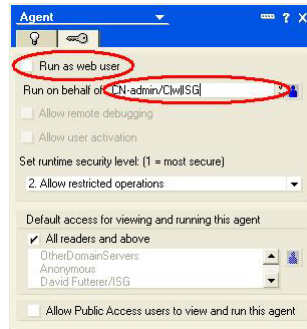


Illustration: Agent Settings

To enable anonymous user access an entry "Anonymous" has to be provided that has access as “Author” or higher. The right “Create documents” should stay deactivated, also the role [Admin] will not be activated.

Consider that using this access type the HTML result pages should only contain links to the title documents itself, if the field \$PublicAccess for these documents is set within the main database, because else access problems can appear. For the web views, GeoCom® Library uses an internal mechanism for permission of documents (see documentation of the GeoCom® Library).

If the “Anonymous” entry is not provided, the first invocation of the search form is followed by a query for username and password. The input is checked against the public names & addresses database. The username and password specified will be used for the complete session.

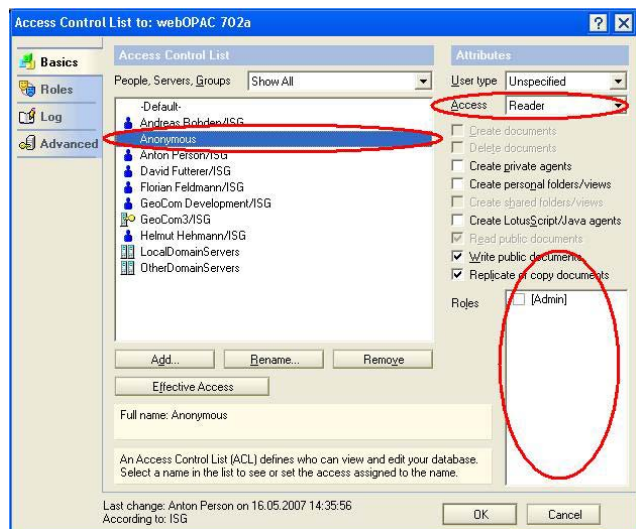


Illustration: Access rights for anonymous webOPAC users

2.1.3 Access rights to the supply databases

To enable the full functionality of webOPAC, an anonymous access to search the supply databases is needed.

Create an entry “Anonymous” in the ACL of each supply database, if it does not already exist. For this entry, choose “No Access” as access type, but enable the permission “Read public documents”.

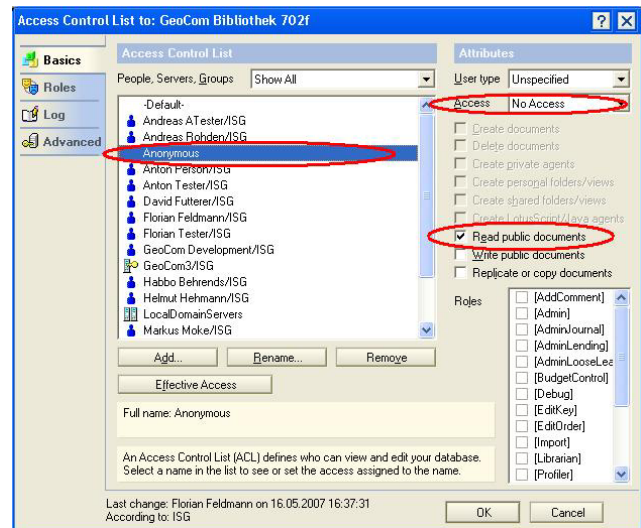


Illustration: Access rights to the supply databases

2.2 Views

The Notes-Interface of the webOPAC database consists of two views with different functions.

The view “01 Configuration web client” comprises different documents to assist the configuration as well as the access to the configuration document itself.

In the view “02 Configuration (Backup)” a backup is created upon each time of saving the document. Thus, you can recover previous configurations, if required.

2.2.1 View "01 Configuration web client"

This view shows all presently defined web documents, i. e. help documents for the application.

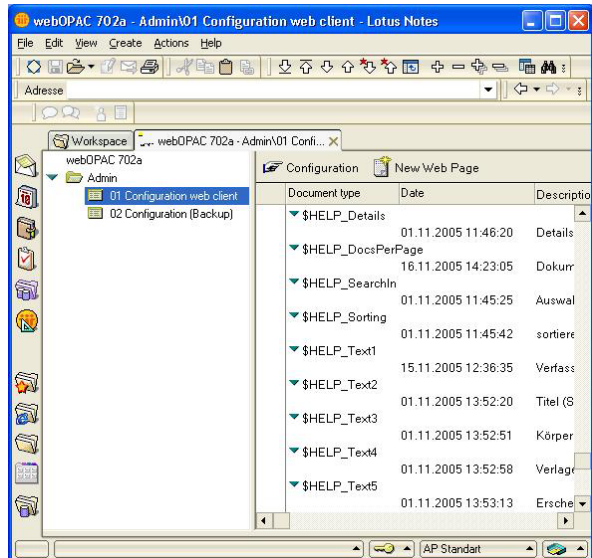
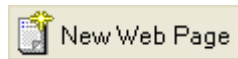


Illustration: View "01 Configuration web client"



You can create a new web document with the button "New Web Page". A form will be shown, where you can put in the corresponding data.

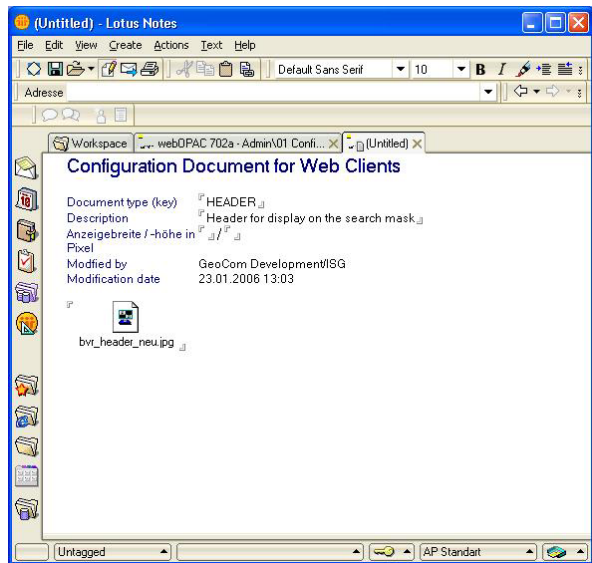


Illustration: New Web Page

Each web document gets an own name in the field *Document type (key)* to be referenced later on. If there are multiple documents with the same key, the newest web document is used automatically.

Put in a short description of the content and the type of the web document in the field *Description*. At online help (see below), this description is also used as tool tip in the web browser.

The both of the fields *Display width* and *height* serves to determine the display size in the browser (in pixel).

Last, the field *Content* can be edited freely. Any texts and graphics can be pasted here and will later be shown within the browser.

Alternatively you can directly put in HTML code into this field. In this case, select it afterwards and choose from the menu:

Text – Pass-Thru HTML

In general, there are two kinds of web documents:

1. Online help for certain fields of the search mask
2. Additional documents for the configuration

For online help, the name has to begin with "\$HELP_" (without quotes), followed by the name of the field.

Example: To create a help for sorting (field name "Sorting"), enter in the field "Document type (key)" the following:

\$HELP_Sorting

After you saved the document, you can move the mouse cursor in the browser over the caption "sort by". The value of the field "Description" in the help document will be shown as tool tip in the browser. A click on the caption opens a new window showing the content of the help document.

➤ **Hint:** To generate online help for the search texts, use "TextX" as field name (without quotes, X is the number of the search field on the mask). This way you can generate online help for each of the up to eight search fields.

For example, to define an online help for the first search field, name the corresponding web document "\$HELP_Text1" (without quotes).

Beside this online help you can create any amount of *additional documents* for the configuration. These additional documents can get any name.

For the case that the documents should depend on the language, append to the key names the suffix "_uk" for an English version of the document, or the suffix "_de" for a German version. In the configuration (see 2.3, Configuration), only the key (without the suffix) is referenced and at runtime, the corresponding language dependent document is used.

Example: You create two web documents with a header line for display in the browser:

HEADER_uk (English version)

HEADER_de (German version)

At the definition of the header line in the configuration use the key HEADER and the application chooses the document with the current language at its own.

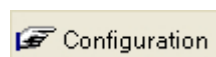
If there is no version with a valid suffix, automatically the document without a suffix is used.

In the configuration, web documents can be embedded for:

- the home page
- the search hints (four documents for: first call, no result, error at the search, other action)
- the header of the search mask (this one should consist of a single graphic)
- the general help page



By clicking the button "Configuration" – provided the appropriate rights - you get to the global configuration document of the application (see 2.3, Configuration).



[Admin] can open an input form by clicking the "Configuration" button. Here you can define the following topics:

- Main Parameter
- Single search
- Extended search
- Title format
- Copy data
- Multiple database OPAC
- Printer
- Contact form
- Special settings
- License

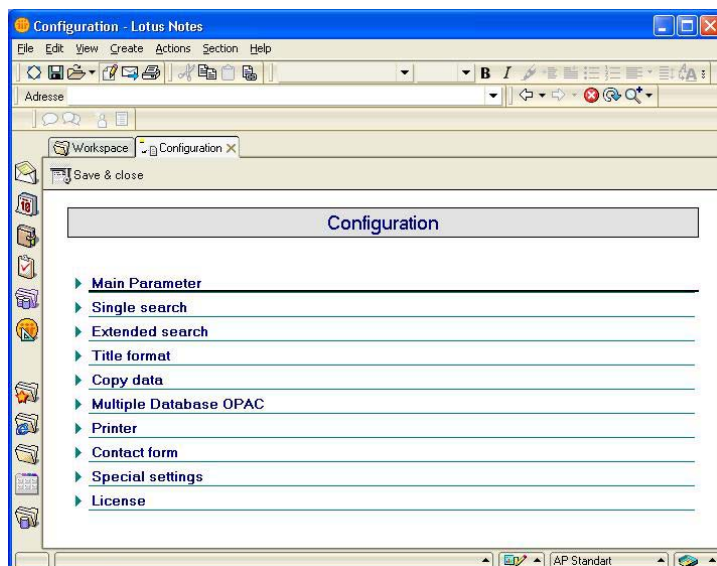


Illustration: Input form "Configuration"

2.3.1 Main Parameter

This section contains the options, which control the general behavior and appearance of the webOPAC mask.

A rectangular button with a light beige background and a thin black border. The word "Default" is centered on the button in a black, sans-serif font.

the application.

A click on the button “Default” resets the current values to the internal defaults.

\$\$SEARCHOP_X

With this placeholder, you can create a drop-down field to link the stated search field with the other fields (AND, OR or NOT links).

For the definition of the particular search fields, see also 2.3.1.9, the list of the search fields.

\$\$SEARCHTEXT_DBSELECT

At runtime, this placeholder will be replaced with the caption of the select field for the database to be searched.

\$\$SEARCHFIELD_DBSELECT

This placeholder creates the select field for the database to be searched.

\$\$SEARCHTEXT_DETAILS

For this placeholder, the caption of the select field for the detail display of a search will be inserted.

\$\$SEARCHFIELD_DETAILS

This placeholder creates the select field for the detail display.

&&SEARCHTEXT_DOCSPERPAGE

With this placeholder, you insert the caption of the select field for the number of results per page.

\$\$SEARCHFIELD_DOCSPERPAGE

This placeholder creates the select field for the number of the shown documents per page.

\$\$SEARCHTEXT_SORTBY

This placeholder creates the caption of the select field for the sorting of the results.

\$\$SEARCHFIELD_SORTBY

With this placeholder, the select field for the sorting will be inserted.

Definition of the buttons:**\$\$SEARCHBUTTON**

This placeholder inserts the button “Search” in the mask.

\$\$CLEARBUTTON

With this placeholder you can create the “Clear” button, which is used to start a complete new search.

\$\$HELPBUTTON

This way the “Help” button will be created, a click on it shows the online help, defined as a web document.

\$\$SUPPORTBUTTON

This placeholder builds a “Support” button, clicking this you can directly send an email to the support mail address, which is entered at the configuration.

\$\$LANGUAGEBUTTON

With this placeholder you create the language select button, that a user can click to switch between the English and the German interface.

\$\$BOOKLISTBUTTON

This placeholder lets the button to create a book list from the chosen result entries appear.

\$\$SELECTALLBUTTON

A placeholder to create a button, that selects all result entries automatically.

\$\$CLEARALLBUTTON

The button, that is created by this placeholder, clears all selections of result entries on the current page.

\$\$SCROLLFIRSTBUTTON

This placeholder creates a button, which lets you jump to the first page of the result view.

\$\$SCROLLPREVIOUSBUTTON

The button, inserted by this placeholder, scrolls a result page back.

\$\$SCROLLNEXTBUTTON

Analogical, the button created by this, scrolls a result page forward.

\$\$SCROLLLASTBUTTON

Using this placeholder, you can insert a button, to get to the last result page.

\$\$EXTENDBUTTON

This placeholder inserts an “Extend” button, that you can use to switch between the extended and the standard search mask.

Other placeholders:**\$\$HEADERIMAGE**

This placeholder inserts the first image from the document entered in the field “Header search mask” (see below).

\$\$BOOKLISTHEADLINE

With this placeholder you can insert the preconfigured book list headline in the mask.

\$\$ECBLANC

This placeholder puts in an empty field.

\$\$SEARCHRESULTINFO

You can show the information line on the search queries (number of results etc.) with this placeholder.

\$\$HELPPAGE

With this placeholder you define, where the web document for the “search hint” (see 2.3.1.7, Search hint) is shown. If the search was successful, no search hint will be shown.

\$\$USERINFO

In the case of non anonymous access (if e.g. only certain persons are allowed to use webOPAC), this placeholder shows the current username.

\$\$LICENSE

For this placeholder, at runtime the internal configured license information will be shown.

A rectangular button with a light beige background and a thin grey border. The word "Default" is centered in the button in a dark grey, sans-serif font.

A click on the button “Default” resets the current values to the internal specified defaults.

2.3.1.6 Format book list

In this field, you can define the format of the book lists. The layout of a book list follows the same rules as the format of the search and result page, i.e. standard HTML with corresponding placeholders (see also 2.3.1.5, Format search / result page).

Default

A click on the button “Default” resets the current values to the internal specified defaults.

<i>ISBN</i>	<i>ISBN</i>
<i>MEDIA</i>	<i>Media</i>
<i>VIPS</i>	<i>Treated persons</i>
<i>VICS</i>	<i>Treated corporate bodies</i>
<i>NamedPlace</i>	<i>Named place</i>
<i>all</i>	<i>In all fields</i>

► **HINT:** Keep in mind, that there can be maximum eight search fields defined and shown on the search mask (in the standard and the extended mode together). If the number extends eight, the surplus fields will be cut off and not shown: First the surplus fields of the extended search will be ignored. If already the number of the standard search fields achieves or exceeds eight, no more additional fields will be shown at the extended search.

Default

A click on the button “Default” resets the current values to the internal specified defaults.

Default

A click on the button “Default” resets the current values to the internal specified defaults.

2.3.1.14 Help

Here you can enter the key of a web document, that will be shown by clicking the “Help”-Button.

If you have created language dependant web documents (e.g. HELP_de and HELP_uk), enter the key without the language suffix (at this case only HELP). The application will choose the corresponding document at runtime, depending on the currently active language.

In this section you can define the formats with which titles are to be displayed.

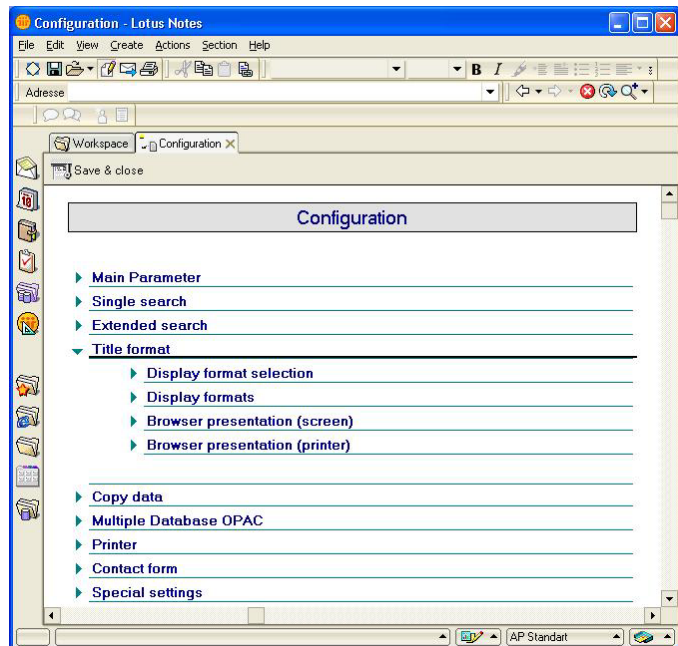


Illustration: Configuration, section "Title format"

The list of all possible placeholders is the following:

\$\$DOCTITLE

The first line of the content determined in the section “Display formats”.

\$\$DOCTEXT

All lines of the content determined in the section “Display formats”, except the first line.

\$\$DOCINFO

The entire content of the respective text, i.e. both of the \$\$DOCTITLE and \$\$DOCTEXT together.

\$\$CHECKBOX

This placeholder creates a select box, which can be used to select the respective entry.

\$\$INDEX

At runtime, this placeholder will be replaced with the consecutive number of the entry in the result set.

\$\$INDEXLINK

This placeholder will be replaced at runtime with the consecutive number of the entry in the result set. By clicking this number, you can open the document directly (if you have the needed access rights in the library database).

\$\$DOCICONS

At the place of this placeholder an icon will be shown at runtime, that shows the type of the entry (e.g. book, exhibit, picture library etc.).

\$\$DETAILLINK

For this placeholder an icon will be shown, that shows the long text of the entry.

\$\$AUTHORLINK

The button, that is created by this placeholder, automatically starts a search for all entries from the same author.

\$\$COMMENTLINK

If there is a comment to the entry, this placeholder shows a direct link to this comment.

\$\$PREVIEWIMAGE

This placeholder adds the preview image of the corresponding document, if it exists, to the result list (see below).

\$\$IMAGE

This placeholder adds the main image of the corresponding document, if it exists, to the result list (see below).

\$\$ANYIMAGE

This placeholder adds the first image of the corresponding document, if it exists, to the result list (no matter if it is a preview or a main image, see below).

➤ **INFO:** To use image files in webOPAC, the corresponding entries in the library database have to be accordingly modified first.

For illustration, image files can be added to a catalogue entry. Using the search function, they will be shown in a small size, additional to the written data of the catalogue entry, and can be enlarged by clicking them.

You can assign a maximum of 2 files with the ending .gif or .jpg to a catalogue entry. To add an image, open the catalogue entry with GeoCom® Library and add the image file to the according field by using the “Attach”-Button.

The chosen files have to match one of the specifications described below. If two files are chosen at the same time, one of them has to match the specifications of the preview and the other one of the main image.

The main image

The main image can be maximum 800 pixel wide and 600 pixel high. A file size of 500 kb should not be exceeded. The filename for this image can be freely chosen, like “house.jpg”. The main image appears after clicking the preview image.

The preview image

The preview image must have a width of 250 pixel and a height of 120 pixel. It is shown on the result page at the right from the text information. The filename consists of “name of the main image” + “_preview” (+ “.gif” or “.jpg”). For example: “house_preview.jpg”.

2.3.4 Copy data

In this section you can define the formats with which copies are to be displayed. For further information on configuring copy data formats, please refer to the configuration documentation of GeoCom® Library.

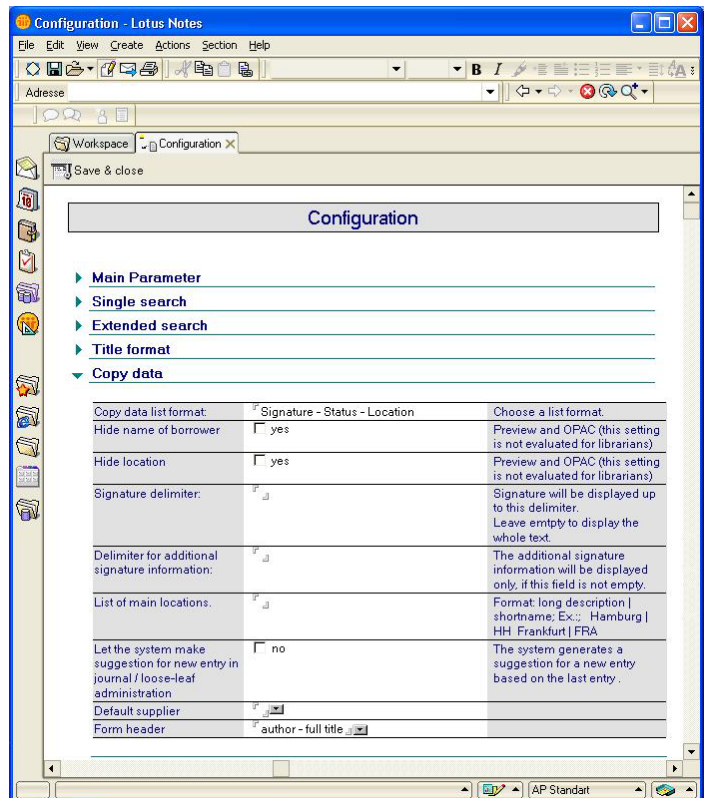


Illustration: Section Copy data

2.3.5 Multiple Database OPAC

In this section parameters for functionality and appearance of the OPAC are defined.

2.3.5.1 Indexed database list

The field "Indexed database list" contains all library databases that are accessible by webOPAC. The name of the server (optional) and the name of the database are separated by a vertical line. Specify each new definition on a new line.

Info: All library databases have to be full text indexed.

2.3.5.4 Short names of databases to display in search result

The field “Short names of databases for display in search results“ contains short forms for database descriptions. These short forms are used for display of search results.

2.3.5.5 Location name used for database selection

The field “Location name used for database selection” contains the database descriptions, that are displayed in the selection box of the OPAC search form. The connection to the list of databases is realised by a database index that is added to the database description (separated by a vertical line).

If you want to integrate multiple databases in one search, the corresponding database indices have to be added to the database description separated by a colon.

This way you can for example search all English or all German data using one selection entry. In case you want to use language depending expressions in this field you have to replace this expression by a variable that is put into square brackets (e.g.: “[LOCATION1]“). After that you can define language dependent texts for this variable (see section 2.3.7).

Example: “LOCATION 1:Wien“ in section “Customer specific texts German“ and “LOCATION 1:Vienna“ in section “ Customer specific texts English“.

2.3.5.9 Max hits

Specify the maximum number of results to be displayed.

2.3.5.10 ISO 3166 Country Code Database

Here you can enter a the database, where country codes are saved (as normal, this is the Data Repository BZC). The format for an entry is as familiar

Server|Database path and filename

2.3.6 Printer

In this section you can define printing parameters (for further information please see the configuration documentation).

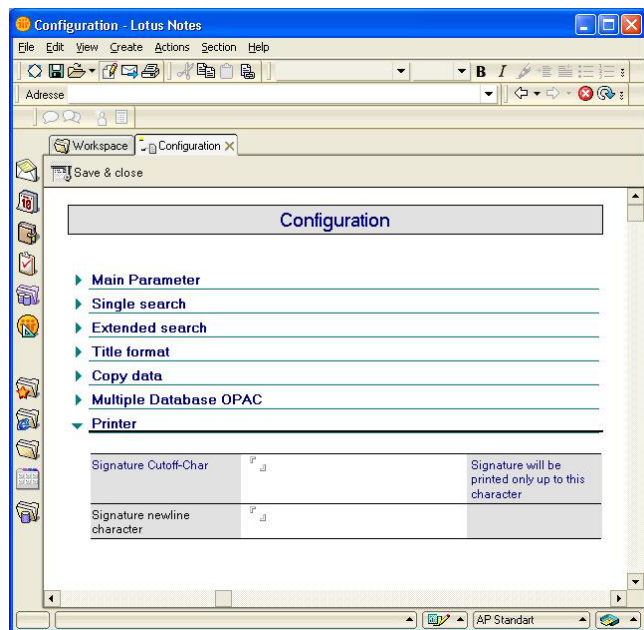


Illustration: Section "Print"

2.3.7 Contact form

This form is a customisation. It can be shown at an according place in the results.

Please contact our customer support on demands concerning this field.

2.3.8 Customer specific german/english prompts

In this section you can make modifications that concern text output and OPAC search form display.

The options can be set for the English or German interface or language independent for the whole application.

You can use the following system variables:

<u>Variable name</u>	<u>Default</u>
wOP_HIDELANBUTTON	0
0 – Show icon for language switching 1 – Hide language switching	
wOP_TYPESELECTDEFAULT	3
Details of search results 1 – Detailed info incl.copy data 2 – Detailed info 3 – Short info	
wOP_USEDOLINKS	1
Links for search results 0 – hide 1 – show	
wOP_SEARCHTITLE	OPAC
Title of OPAC-Search form	
wOP_BOOKLISTTITLE	Booklist
Header for Booklists	
wDebug	DETAILED
Debug mode	
wDebugDB	bzwlog.nsf
Database to write the debug information	
wDebugIP	
Limit debug access to a certain IP	
wDebugDate	
Perform debug only on this date. Required field, to avoid permanent debug events	
DATASELECTENABLED	1
Extended selection possibilities	
DATASELECTURLTOKEN	DataSelect
Name of the URL parameter for extended selection	
DATASELECTFORMULA	%%([Origin_ID]=\$VALUE)
Formula to select by origin	
DATASELECTREGEX	[1-9]*
Values for \$VALUE have to match this regular expression	
DATASELECTINFO	
Source for extended selection information e.g.: bz600\bzc600m.nsf KEYWORDS 2 ORIGINID	
DATASELECTSEARCHDB	
DB to be searched for extended selection e.g.: ISG Patterns 65\bz\bz600\bz600m.nsf	

SESSIONLOG

Log DB for session information

e.g.: ISG Patterns 65\bz\bz600\bzl600m.nsf

OPACLOG

Log DB for accomplished searches

e.g.: ISG Patterns 65\bz\bz600\bzl600m.nsf

2.3.9 License

In this section you can have a look at the current licence and start updates if necessary.