

GeoCom[®] File Import

The intelligent way to import data records



GeoCom[®] File Import enables you to import any data record of the ASCII-format into a Lotus Notes database in an easy and fast way!

Advantages

- Imports any ASCII formatted data records to Lotus Notes databases in an easy and fast way
- Platform independence due to Lotus Domino[®]
- Manual or scheduled file import via Notes agent
- Import of data with more than 32,768 records
- Automatic start of your own postprocessing agents
- @ formulas can be used to determine field values
- Arbitrary target databases and source data
- Automatic adoption of data from existing Notes documents
- Useable for regular data synchronisation
- Multiplex settings for exact data mapping
- Detailed report functions
- Fully integratable into existing systems
- Single license for 1.500,00 EUR only
- <http://www.geocom.de>

What is GeoCom[®] File Import?

GeoCom[®] File Import is a module that is designed to import any data record of the ASCII format into an arbitrary Lotus Notes database, e.g. into the customer and marketing related information system GeoCom[®] Customer & Contacts. The application GeoCom[®] File Import is based on the platform Lotus Domino[®].

Working with GeoCom[®] File Import

Using the multiplex configuration options it is possible to adjust the data import to defined Notes databases exactly. GeoCom[®] File Import enables you to accomplish the import of data manually, e.g. for one time adoption of customer data from an external database. Additionally, the application can be used for regular synchronisation via Notes-agent between external data and corresponding records within the target database. Aside GeoCom[®] File Import provides you with information according to all import procedures: clear report-functions offer you extensive information on all completed imports, including all reading errors, which might have occurred during the file import.

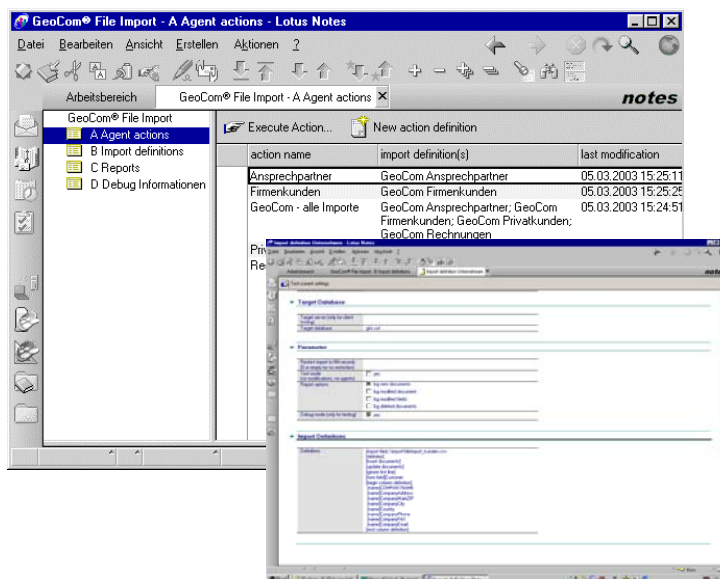
Advantages of GeoCom[®] File Import

In contrast to an import using the Notes-default import function GeoCom[®] File Import has numerous advantages, e.g. insert or update mode, import to any target database, import of data with more than 32.768 records, automatic start of post processing agents, possibility to combine several import procedures to one single action or automatic synchronisation of

additional Notes documents - to name only a few.

Functionality of GeoCom[®] File Import

To import data records of the ASCII format successfully, special definitions have to be made first. These include information like name of target database, protocol definitions, structure of the imported data as well as mapping of source fields from the import file to destination fields of the Notes document for a single import procedure.



To monitor the success of the imports, detailed information can be displayed in form of extensive report functions. Moreover, a debug document can be set up, if problems during file import occur.

Additional information

For additional information about the module GeoCom[®] File Import visit our website at: www.geocom.de

or call us at: +49 (0) 234-94175-0